






16 Pacific Street Blakehurst NSW

5  3  3 

Positioned on an 525sqm parcel of level land in one of Blakehurst's premier streets is this stunning family residence offering comfortable living across two spacious levels. Boasting impeccable flow across a generous floorplan, light-filled interiors, five bedrooms and multiple living & entertaining spaces, it's an ideal home for a large family. Enjoying an idyllic & peaceful address, this superb property is on the doorstep to buses and 150m stroll to Baldface Primary School, with Hurstville shopping village also just a short distance away.

Solid brick construction, Dual level home of fresh interiors & beautiful timber floors

Open plan living & dining opens to a covered entertainers' terrace

Type : House
Land Size : 525 sqm
View : <https://www.luxebyymm.com.au/sale/nsw/st-george/blakehurst/residential/house/5884876>

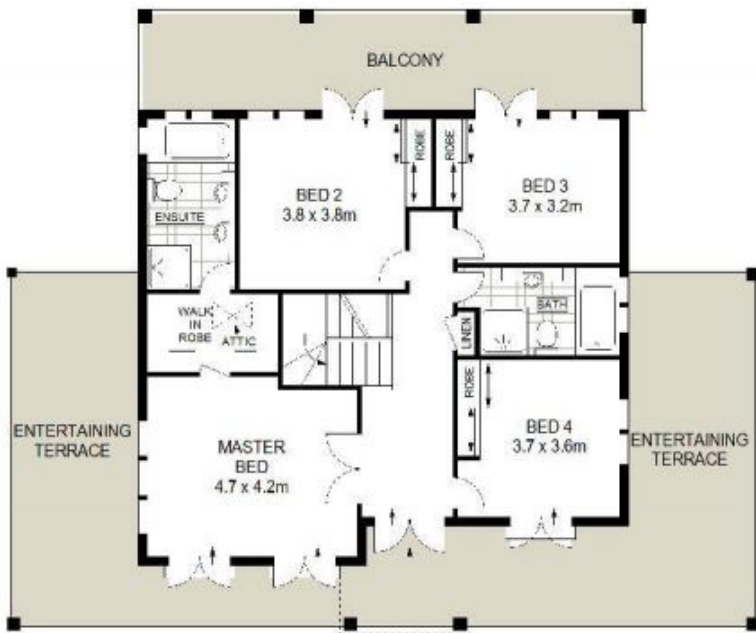


Maurice Maroon
02 9547 0008



Frances Maroon
02 9547 0008

[For full version visit the website](https://www.luxebyymm.com.au)



FIRST FLOOR



SITE PLAN (NOT TO SCALE)



GROUND FLOOR

ADDRESS :
16 Pacific Street, BLAKEHURST



DISCLAIMER: THIS IS FOR ILLUSTRATIVE PURPOSES ONLY. ALL DIMENSIONS ARE APPROXIMATE AND IT DOES NOT CONSTITUTE PART OF ANY LEGAL DOCUMENTS.