






**24 Currawang Street Carss Park NSW**

5  3  2 

Lifestyle - Beyond the classic facade of this double brick Californian bungalow is a large multi-level family home with impressively proportioned interiors, quality finishes and unique character details. Cleverly extended, it offers an abundance of space for indoor/outdoor entertaining, featuring several living and dining areas plus a contemporary kitchen with walk-in pantry.

**Type** : House  
**Price** : \$ 1,695,000  
**Land Size** : 600 sqm  
**View** : <https://www.luxebyymm.com.au/sale/nsw/st-george/carss-park/residential/house/5884949>

Accommodation - The property enjoys a wonderful sense of privacy and has a landscaped garden, covered alfresco dining plus five bedrooms including a teen retreat and main with ensuite and walk-in. There is also a rumpus/study, high ceilings plus home theatre and ample parking, while schools, Carss Bush Park and shops are within walking distance.

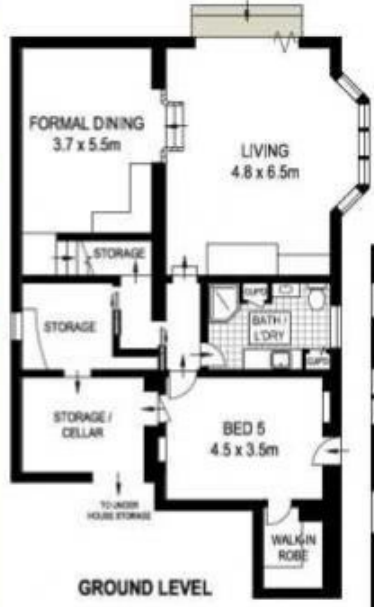


**Maurice Maroon**  
 02 9547 0008

[For full version visit the website](https://www.luxebyymm.com.au)



**SITE PLAN  
(NOT TO SCALE)**



**GROUND LEVEL**



**ENTRY LEVEL**



**LEVEL ONE**

APPROX. INT: 317 m<sup>2</sup>  
LAND AREA : 607 m<sup>2</sup>



Scale in metres, Indicative only. Dimensions are approximate. All information contained herein is gathered from sources we believe to be reliable. However we cannot guarantee its accuracy and interested persons should rely on their own enquiries.