



Blakehurst

5 🛏 3 🚿 2 🚗

Lifestyle - Positioned on over 800 m2 within the exclusive Bald Face peninsular of Blakehurst this spacious home enjoys water views, large living areas, terrace and level north facing rear yard with inground pool. With impressive 20 metre frontage, separate lounge, formal dining, family, alfresco dining and self-contained rumpus or teenage/in-law accommodation there is ample space to relax or entertain and while the home is comfortable as is, there is scope to enhance by adding your own designer touches

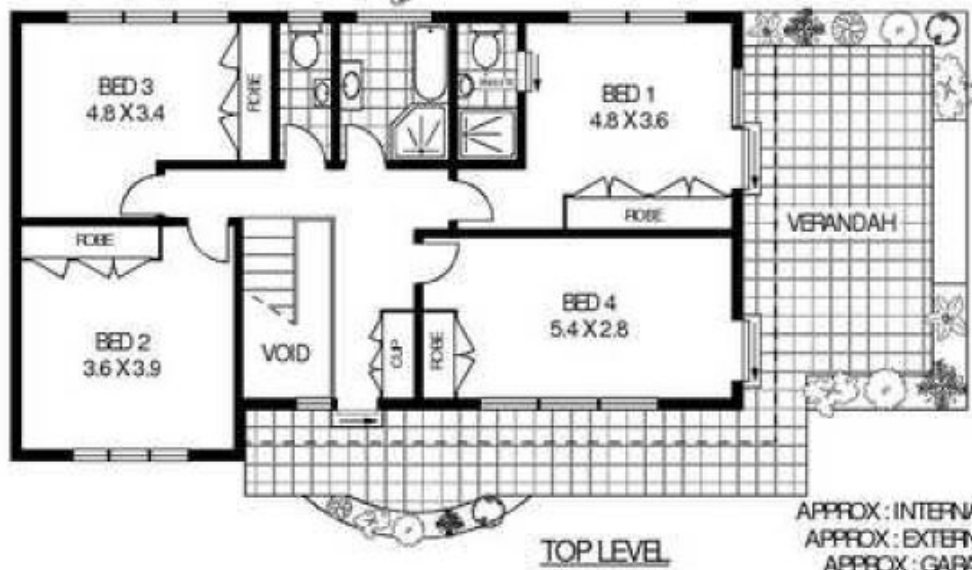
Accommodation - Nestled behind the modern street frontage is a spacious, light-filled residence with impressive foyer, lounge, north facing dining, separate family room and alfresco dining which overlook the rear yard and pool,

Type : House
Price : \$ 1,400,000
Land Size : 818 sqm
View : <https://www.luxebyymm.com.au/sale/nsw/st-george/blakehurst/residential/house/5884980>



Maurice Maroon
02 9547 0008

[For full version visit the website](https://www.luxebyymm.com.au)



APPROX : INTERNAL AREA : 226 SQM
 APPROX : EXTERNAL AREA : 99 SQM
 APPROX : GARAGE AREA : 17 SQM



5 PACIFIC STREET

BLAKEHURST

Floor Plan Disclaimer: Mind the Gap (mtg) floor plans/ site plans are intended as an approximate guide only. No representations or warranties of any nature are given or intended and any person using this information other than as a guide should always rely on their own enquiries. Mind the Gap property marketing services/ 1300 133 145 / Photography, Floor plans, Copywriting, Video, Online, Design / www.mindthegap.com.au