



3 Langshaw Place Connells Point NSW

4  3  2 

On offer in a quiet cul-de-sac setting, this double storey residence boasts a choice of versatile living areas and recreation facilities. With several popular parklands just a stroll away, it is a spacious haven that will suit families who enjoy entertaining.

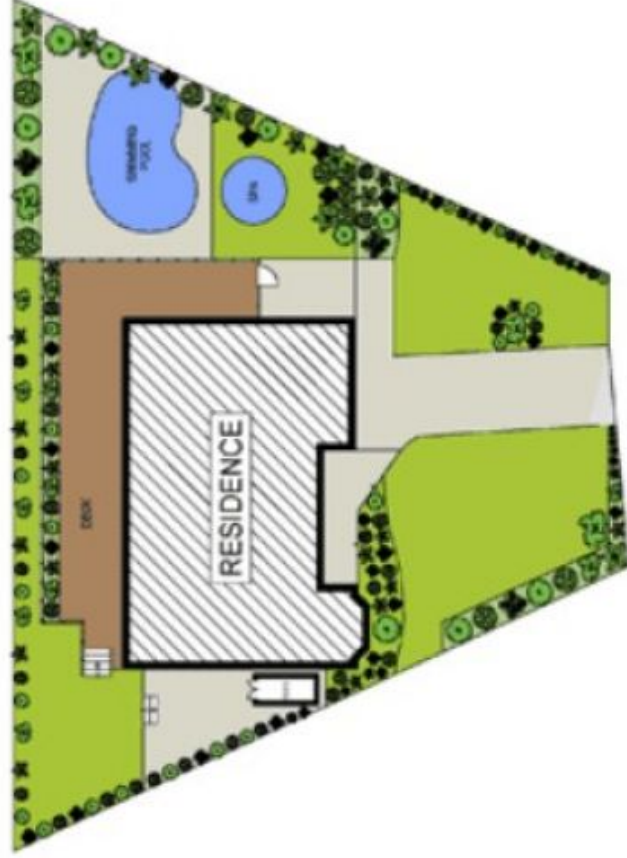
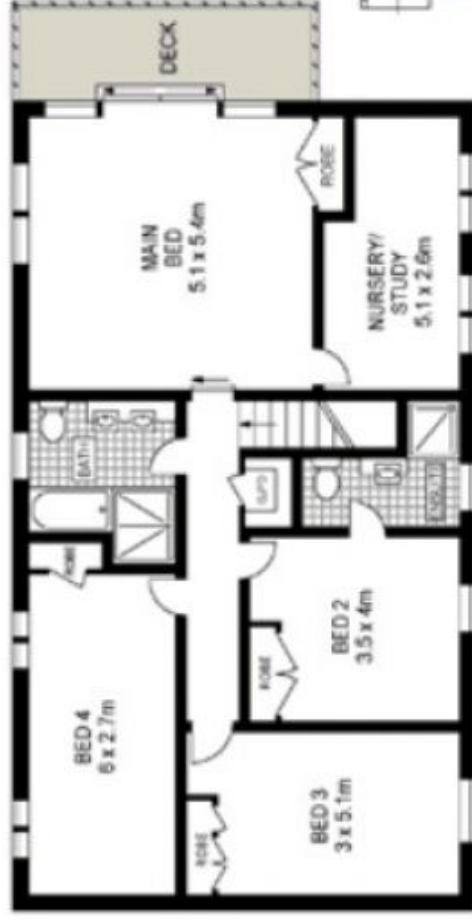
- Large and light formal lounge, dining and family spaces
- Open plan living and CaesarStone kitchen with island bench
- Extensive wraparound entertainers' deck, easycare gardens
- Double bedrooms with built-ins, second bedroom has ensuite
- North facing rear with in-ground solar heated pool and spa

[For full version visit the website](https://www.luxebymm.com.au/lease/nsw/st-george/connells-point/residential/house/7017388)

Type : House
Land Size : 689 sqm
View : <https://www.luxebymm.com.au/lease/nsw/st-george/connells-point/residential/house/7017388>



Frances Maroon
02 9547 0008



Scales in metres. Indicative only. Dimensions are approximate. All information contained herein is gathered from sources we believe to be reliable. However we cannot guarantee its accuracy and interested persons should rely on their own enquiries.