



**223 Stuart Street Blakehurst NSW**

5 🏠 6 🚗 5 🚗

This ideal family home, located in the highly sought-after and exclusive Bald Face peninsula, offers a private waterfront setting with stunning views of Kangaroo Point and Kyle Bay from the rear and Shipwrights Bay from the front. Set on just under 1,000sqm of street-to-waterfront land, offers unparalleled privacy and tranquility.

**Type** : House  
**Price** : Auction  
**Land Size** : 988 sqm  
**View** : <https://www.luxebyymm.com.au/sale/nsw/st-george/blakehurst/residential/house/8015897>

Positioned in a sunny, private, and picturesque setting with breathtaking views of the Georges River, this magnificent waterfront estate offers a luxurious lifestyle. The residence combines contemporary design with timeless classical style, perfect for family living and entertaining. Open-plan interiors ensure breathtaking views from all entertaining and living areas, while all bedrooms boast expansive views of the Georges River. The outdoor living spaces make this

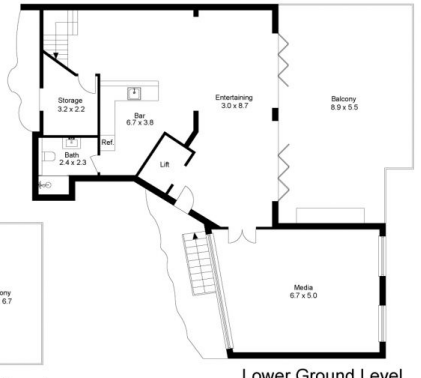
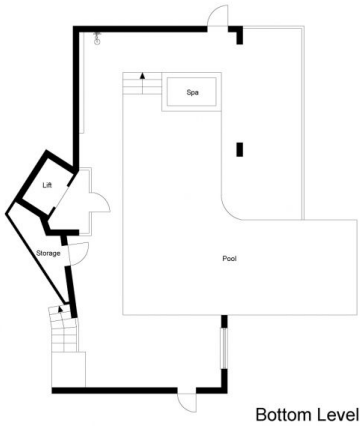
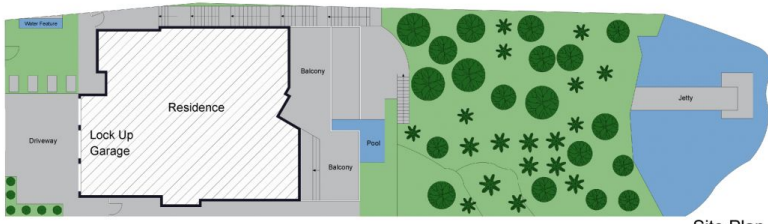
[For full version visit the website](https://www.luxebyymm.com.au)



**Maurice Maroon**  
02 9547 0008



**Sookie Yue Luo**  
02 9547 0008



The site plan and floor plan are not to scale; measurements are indicative and in metres. Bushes and trees are placed for illustration purposes. Plans should not be relied on. Interested parties should make and rely on their own enquiries.

Produced by DIAKRIT



The floor plan is not to scale; measurements are indicative and in metres. All features included in this 3D plan are for inspiration purposes only. This is not an exact replica of the property or the position of exterior elements. Plans should not be relied on. Interested parties should make and rely on their own enquiries.

Produced by DIAKRIT