



15 Bellinger Place Sylvania Waters NSW

5 🏠 4 🚗 4 🚗

Showcasing a deluxe full renovation and custom-made architect redesign, this well-sized freestanding residence sits on a generous 575sqm (approx.) block of land in one of Sylvania Waters' most sought-after cul-de-sacs. The magnificent residence has been totally renewed for a glamorous living experience and features a substantial dual-level floorplan adorned with elegant appointments, many 'wow-factors' and spaces for all types of entertaining.

Type : House
Price : Auction Guide | \$2,600,000
Land Size : 575 sqm
View : <https://www.luxebyymm.com.au/sale/nsw/sutherlandland/sylvania-waters/residential/house/8034994>

It has a fresh, bright, and breezy design that's supremely easy-to-maintain, featuring crisp and contemporary interiors with sleek polished concrete flooring. The generous open plan layout connects seamlessly to the outside, offering space, light and luxury for those who love

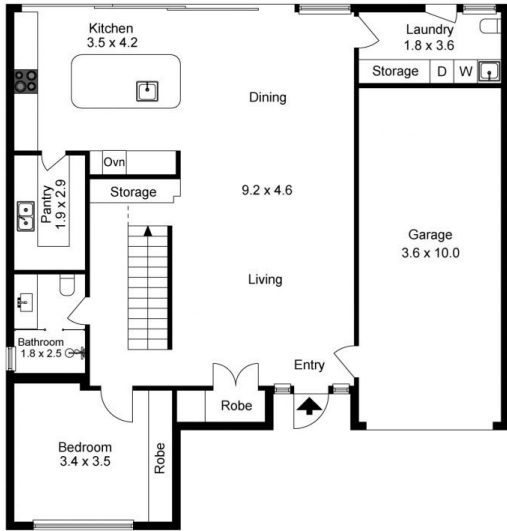
[For full version visit the website](https://www.luxebyymm.com.au)



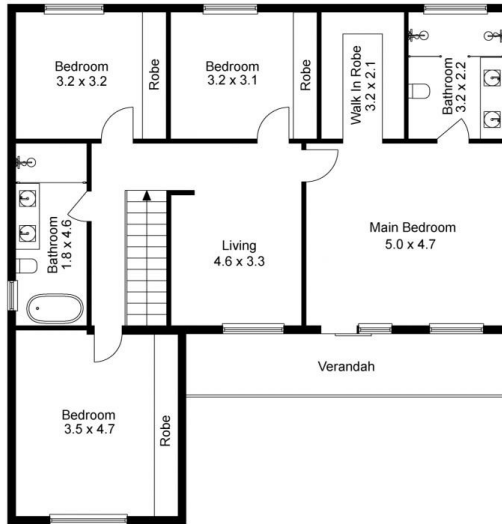
Maurice Maroon
02 9547 0008



Jenny Longo
02 9547 0008



Ground Floor



First Floor



Site Plan



The site plan and floor plan are not to scale; measurements are indicative and in metres. Bushes and trees are placed for illustration purposes. Plans should not be relied on. Interested parties should make and rely on their own enquiries.

Produced by DIAKRIT



Ground Floor



First Floor



The floor plan is not to scale; measurements are indicative and in metres. All features included in this 3D plan are for inspiration purposes only. This is not an exact replica of the property or the position of exterior elements. Plans should not be relied on. Interested parties should make and rely on their own enquiries.

Produced by DIAKRIT