






**Level 10/1003/2 Kiln Road Kirrawee NSW**

3  2  2 

Discover the perfect blend of style, convenience, and accessibility in this bright and sunny apartment, ideally located on level 10 of South Village. Designed for modern living, this spacious home offers stunning features, a serene lifestyle, and easy access to all amenities.

**Type** : Apartment  
**Price** : \$1,300,000 - \$1,350,000 | For Sale  
**Land Size** : 158 sqm  
**View** : <https://www.luxebyymm.com.au/sale/nsw/sutherlandland/kirrawee/residential/apartment/8084358>

**LUXE POINTS:**

-Accessible Design: -This apartment features mobility-friendly access, including wide hallways, an accessible master bedroom and ensuite, as well as one of two parking spaces designed for disability access.

- Spacious Living: - Enjoy the generous open-plan living and dining area that flows seamlessly to a large balcony,

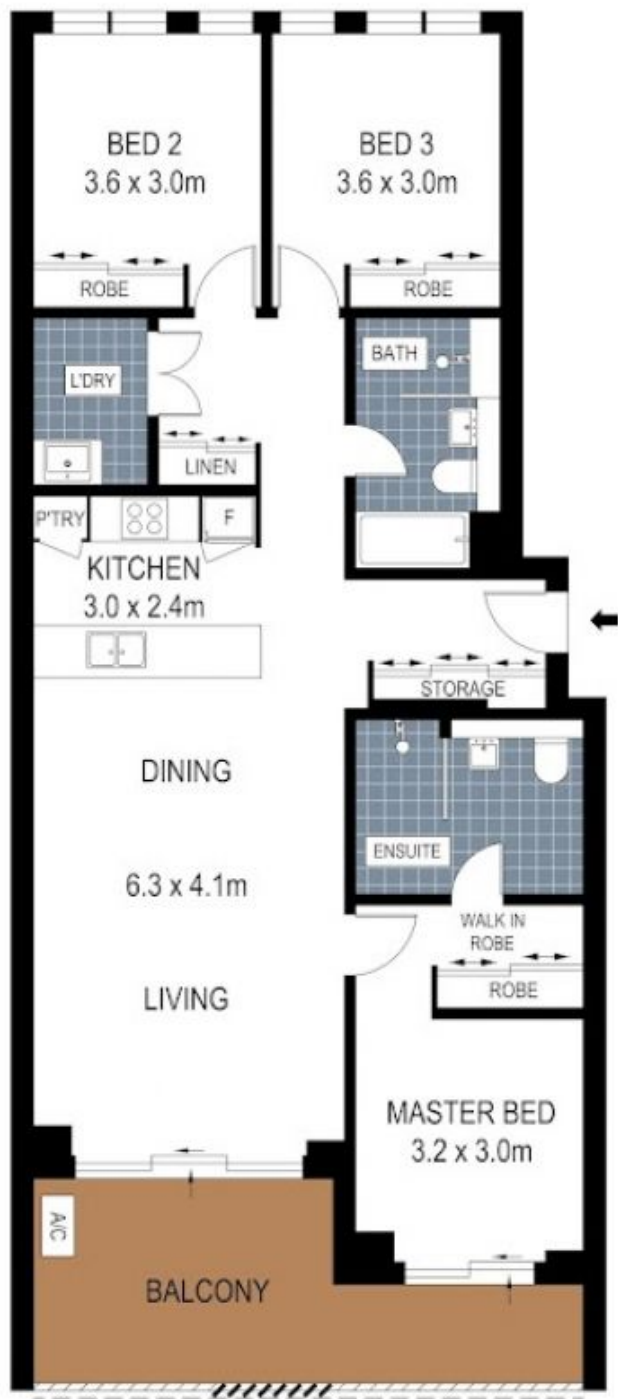
[For full version visit the website](https://www.luxebyymm.com.au)



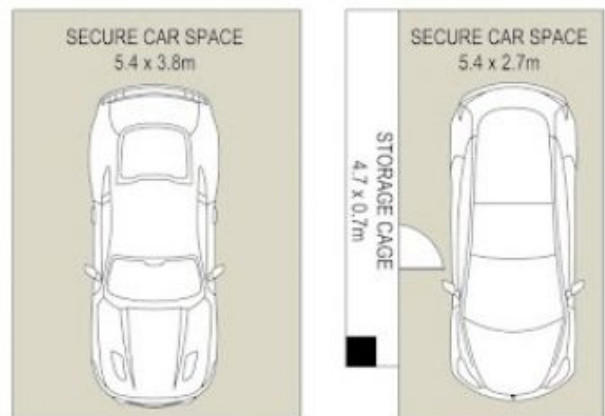
**Lucy Stylianou**  
02 9547 0008



**Larissa Stylianou**  
02 9547 0008



**LEVEL TEN**



**BASEMENT TWO**

